

V-Slim Dotless

Super-slim profile of just W7.9 mm x H11.9 mm with built-in plug-in connector that allows head-to-head fixture-to-fixture connection.

Suitable for cabinet, niche lighting or other furniture applications.

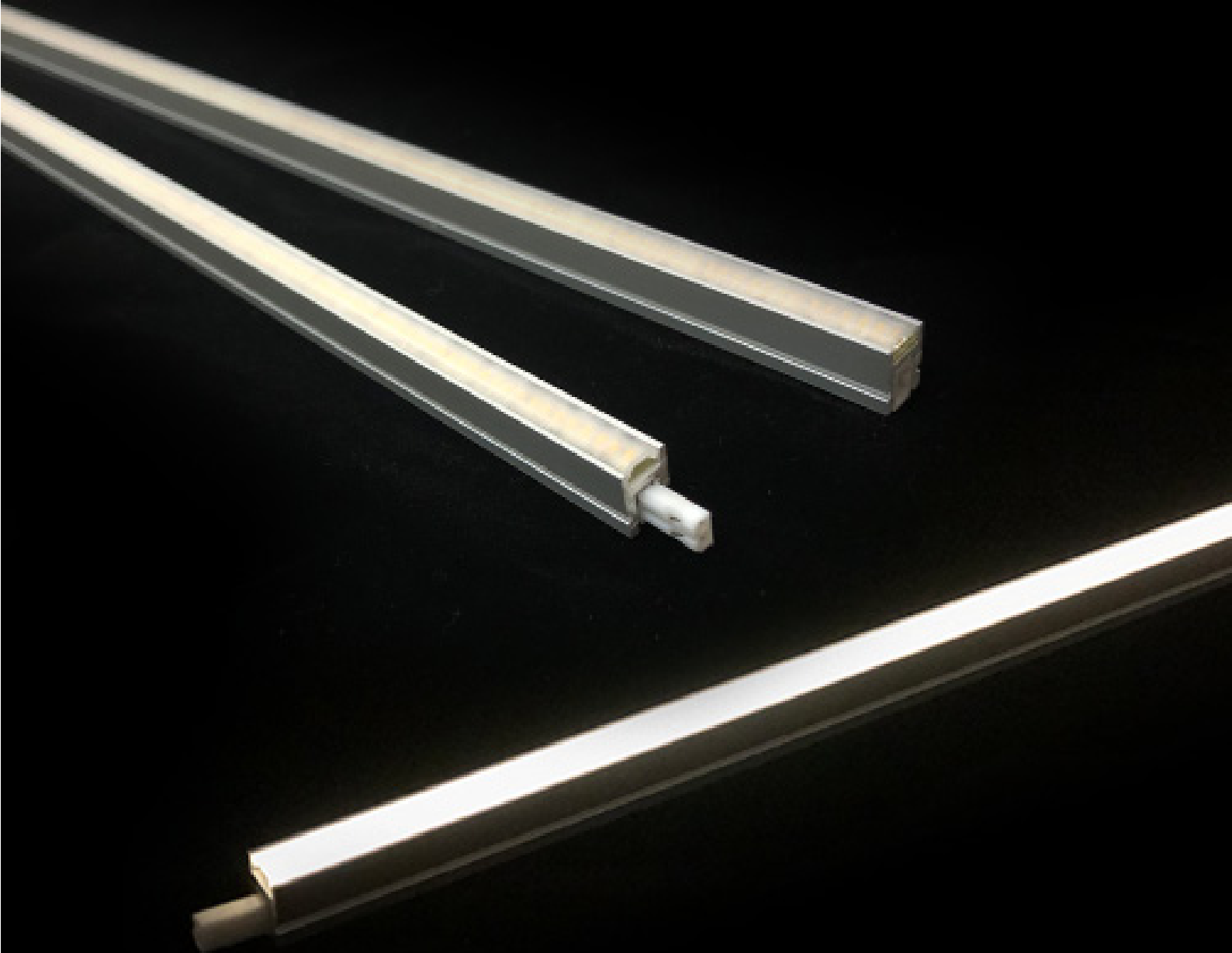
DC24V

12.0W/m

Indoor

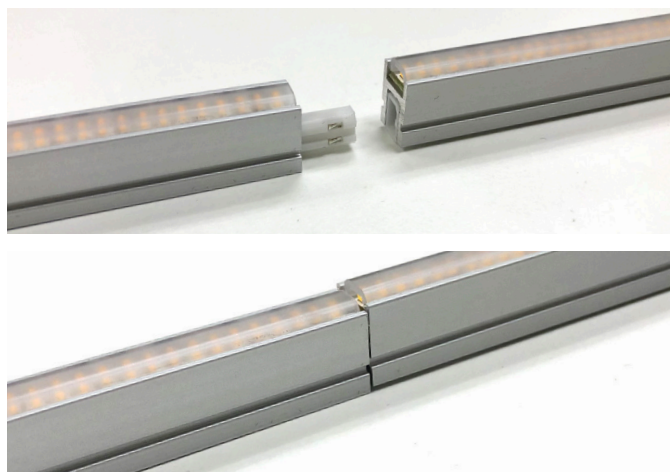
Ra85 typ.

Dimmable
(DMX, DALI,
0-10V)

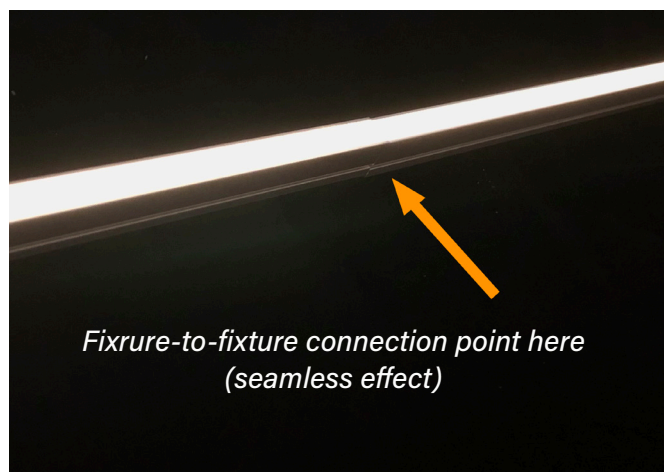
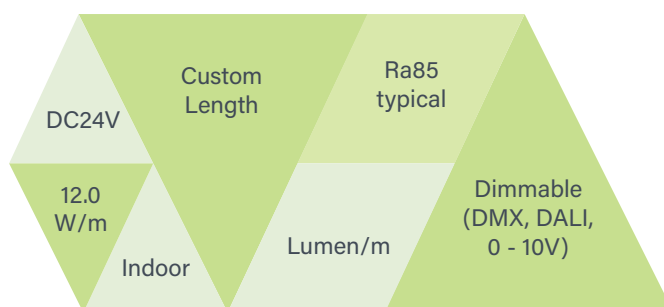


FEATURES

- Ultra-slim profile W7.9 mm x H11.9mm.
- Built-in connector that allows head-to-head seamless connection.
- Available in CCT 2700K, 3000K and 4000K.
- Reliable/High-efficiency NICHIA LED chip with reverse-polarity protection circuit.
- Minimized voltage drop due to wires running through the whole housing.



BASIC SPECIFICATION



PRODUCT SPECIFICATIONS

Product Name	V-Slim				
Model No.	VSD0331-XXXX	VSD0661-XXXX	VSD0817-XXXX	VSD0991-XXXX	VSD1147-XXXX
Input Voltage	24Vdc	24Vdc	24Vdc	24Vdc	24Vdc
Power Consumption	4 W	8 W	10 W	12 W	14 W
Dimension (mm)	331*7.9*12(H)	661*7.9*12(H)	817*7.9*12(H)	991*7.9*12(H)	1147*7.9*12(H)
Weight	63 grams	125 grams	119 grams	179 grams	208 grams
Casing Body	Aluminium Heatsink with UV-resistant Polycarbonate Semi-Frosted Diffuser				
LED Beam Angle	110°	110°	110°	110°	110°
Operating Temperature	-10°C~50°C	-10°C~50°C	-10°C~50°C	-10°C~50°C	-10°C~50°C
Max. Length of Series Connection	4 meter	4 meter	4 meter	4 meter	4 meter
Option Parts	Metal Mounting Bracket 0° (Flat) Type				
No of LEDs	133	266	329	399	462
Power Supply Unit (Gear-Driver)	Contant-Voltage Switching Power Supply (TDK Lamba, Sold Separately)				
Lumens (typical @ CCT 3000K)					

MODEL NO

Model No

VSDXXXX – XXXX – H

Fixture Type & Fixture Length

Color Temperature

LED Color Rendering

Fixture Type & Fixture Length

VSD1147 → V-Slim Dotless L1147mm

VSD0991 → V-Slim Dotless L991mm

VSD0817 → V-Slim Dotless L817mm

VSD0661 → V-Slim Dotless L661mm

VSD0331 → V-Slim Dotless L331mm

** Above stated fixture length does not include connectors.*

Color Temperature

40XX → LED Color 4000K (Ra85 typical)

35XX → LED Color 3500K, Build-to-order (Ra85 typical)

30XX → LED Color 3000K (Ra85 typical)

27XX → LED Color 2700K (Ra85 typical)

** The last two code "XX" stands for color binning code (by NICHIA Japan's LED binning) as per MacAdam Step 3 basis*

LED Color Rendering

H → CRI Minimum 90 type (custom-spec)

** High CRI Ra95 (typical) available upon custom-request*

Example

VSD0331 – 27XX

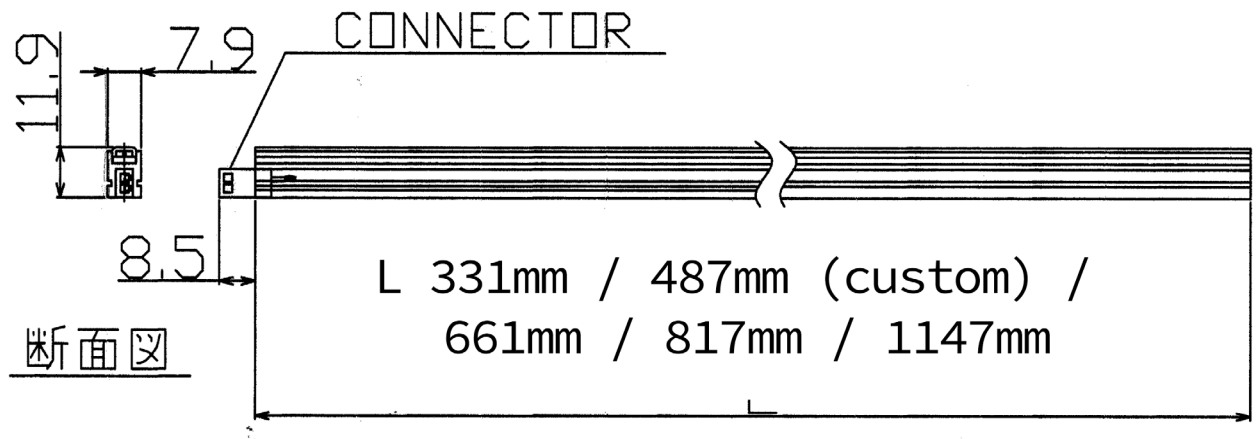
Fixture Type & Fixture Length

Color Temperature

V-Slim Dotless L331mm

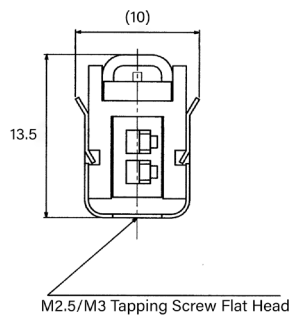
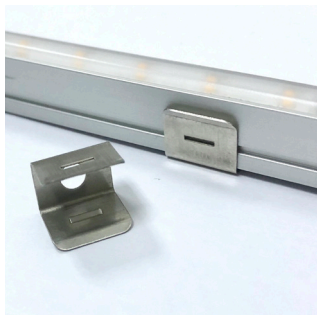
LED Color 2700K

MECHANICAL DRAWING



OPTIONAL ACCESSORIES

- 1 **Mounting Clip Bracket 0° Flat Type**
Model: MMC-VS-0DEG



PHOTOMETRICS

BROWNIE Lab 190214
VS0661-30XX

IES File getting ready soon.

- 2 **Male Harness Connector with L500mm Cable**
* Required for first LED Fixture leading to PSU driver

