

# Dot-Less II RGB

---

The RGB version of Dot-Less II.

DC24V

12W/m  
(max)

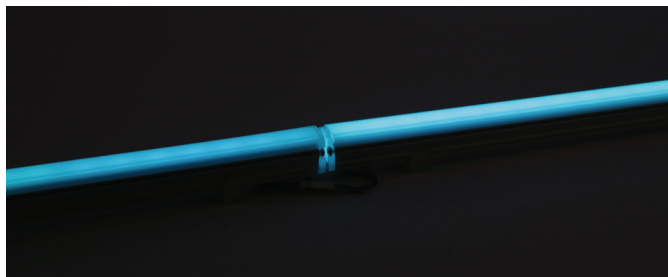
Indoor

Dimmable

LED  
Spot-Less

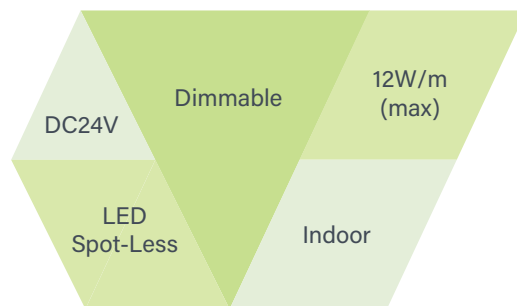
## FEATURES

- Linear LED fixture that can achieve uniform effect without LED dots seen and with much higher lumen output than Dot-Less first-generation model.
- Control Protocol: DMX / DALI (Depending on Interface Driver module)
- Fixture comes with pre-soldered harnessed plug-in connectors

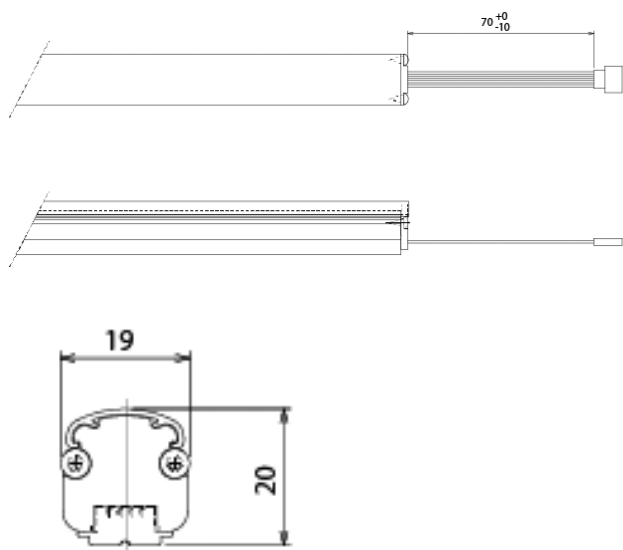


- End-cap parts
- Translucent material at fixture-to-fixture connection points
- Able to create seamless effect with no LED spots seen.

## BASIC SPECIFICATION

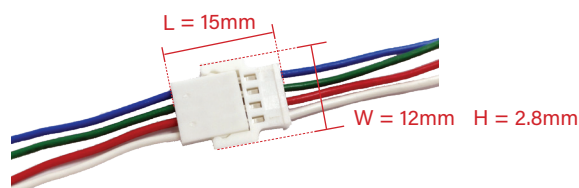


## MECHANICAL DRAWING



※ Final design subject to change without prior notice

### Male-Female Connector (Standard Spec comes with this connector)



White Cable = Common Positive (+)  
Red Cable = Red (-)  
Green Cable = Green (-)  
Blue Cable = Blue (-)



Connectors can be concealed here

Model No

**DL**      **XXXX** – **FC**      **X**

Fixture Type

Fixture Length

Color Temperature

Type of LED used

Fixture Type

**DL** → Dot-Less II

Fixture Length (for Dot-Less II)

**0960** → L960mm, **Standard**

**0640** → L640mm, **Standard**

**0320** → L320mm, **Standard**

**0112** → L112mm, Build-to-order

Color Temperature

**FC** → Full Colour RGB

Type of LED used

- A** → Type A, manufactured by NICHIA Japan (Ra85 typ.)  
(For Dot-Less II, CCT 2400K build-to-order can only be made using this LED)
- B** → Type B, manufactured by NICHIA Japan (Ra95 typ.)  
(= Standard for Dot-Less II)
- X** → Type X, manufactured by NICHIA Japan RGB SMD LED  
(= Standard for Dot-Less II RGB)

Example

**DL**

**0960** – **FC**

**X**

Fixture Type

Fixture Length

Color Temperature

Type of LED used

Dot-Less II

L960mm, Standard

Full Color RGB

Type X,  
manufactured by  
NICHIA Japan  
RGB SMD LED

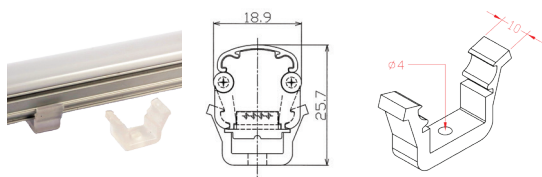
PRODUCT SPECIFICATIONS				
Product Name	Dot-Less II RGB (12.0 W/meter @ maximum output for Red • Green • Blue in White)			
Model No.	DL0112-FCX (L112mm) <b>(Build-to-Order)</b>	DL0320-FCX (L320mm)	DL0640-FCX (L640mm)	DL0960-FCX (L960mm)
Input Voltage	24.0Vdc (TDK Lambda recommended)			
Power Consumption	1.3 W (max) (Apprx. 12W/meter)	4.0 W (max) (Apprx. 12W/meter)	8.0 W (max) (Apprx. 12W/meter)	12.0 W (max) (Apprx. 12W/meter)
Dimension (mm)	112*19*20(H)	320*19*20(H)	640*19*20(H)	960*19*20(H)
Weight	32 grams	93 grams	186 grams	278 grams
Casing Body	Aluminium extrusion heatsink with frost polycarbonate cover			
LED Beam Angle	105°	105°	105°	105°
Operating Temperature	-10°C~45°C	-10°C~45°C	-10°C~45°C	-10°C~45°C
Maximum Length of Series Connection	3 meter	3 meter	3 meter	3 meter
Option Parts	Mounting clip bracket 0° (flat) type / or 45° fixed angle type			
No of LEDs	7	21	42	63
Power Supply Unit	<b>24.0Vdc</b> Constant-Voltage Switching Power Supply (* TDK Lambda brand)			
Dimming/RGB Colour Control	*With recommended DMX compatible dimming driver unit (For detail, see page 82 "V-Dimmer-3")			
Lumens in White Colour (typical figure)	105 Lumens (typical)	160 Lumens (typical)	320 Lumens (typical)	490 Lumens (typical)
Available LED Color				
Daylight 6500K (Ra85)	Available in other product series; Dot-Less II / or V-Tune-X			
Cool White 4000K (Ra95)	Available in other product series; Dot-Less II / or V-Tune-X			
3500K (Ra94)	Available in other product series; Dot-Less II / or V-Tune-X			
Light Warm 3000K (Ra95)	Available in other product series; Dot-Less II / or V-Tune-X			
Standard Warm 2700K (Ra95)	Available in other product series; Dot-Less II / or V-Tune-X			
Dark Warm 2500K (Ra85)	Available in other product series; Dot-Less II / or V-Tune-X			
RGB Full Color	●	●	●	●



## OPTIONAL ACCESSORIES

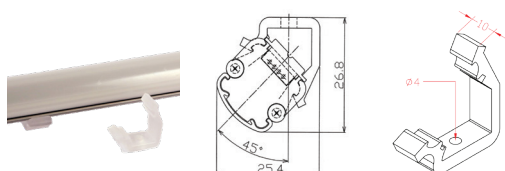
### 1 Mounting Clip Bracket 0° Flat Type

Model: MC-0DEG



### 2 Mounting Clip Bracket 45° Type

Model: MC-45DEG



### 3 V-Dimmer-3

(3-Channel DMX Interface Driver Module)

- 24Vdc input/output
- 3 Channel (for R•G•B)
- Maximum Load 2A per channel @25°C
- Total 6A Load @25°C (= Maximum 10meter of Dot-Less RGB LED Fixture)
- DIP Switch (DMX mode / Auto Mode / Manual Mode are available)
- Address Setting by DIP Switch
- Synchronize up to 32 units in series with built-in program
- IP20
- DMX -512 (1990)
- Dimension 110mm x 60mm x 17.8mm (H)
- Weight 170 grams
- Operation Temperature: 0°C ~ 45°C



## PHOTOMETRICS

Dot-Less II, L960mm

Model No: DL0960-FCX

Luminous Flux (Luminaire): 493 lm

Luminous Flux (Lamp): 493 lm

Luminaire Classification according to CIE: 95

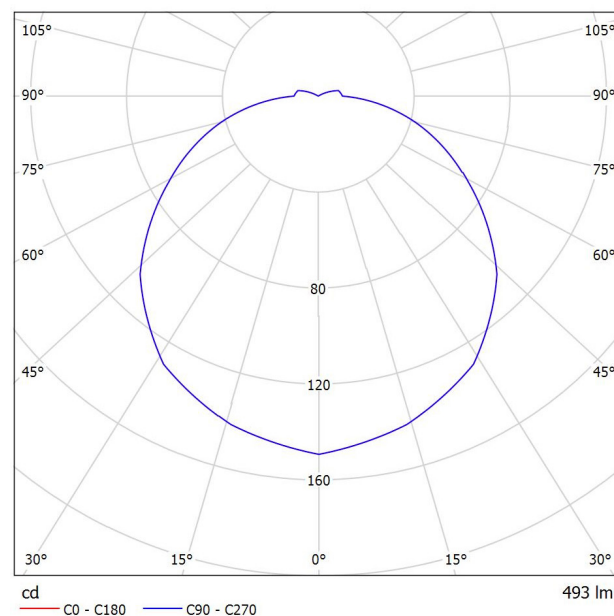
CIE Flux Code: 42 73 91 95 100

(Fitting: 1 x User defined (Correction Factor 1.000).

When set at Full Output of RGB

in White (11.8Watt@ 24.0Vdc)

※ Lumen output is a typical figure, as there is variance depending on some parameters and manufacturing batch of LEDs



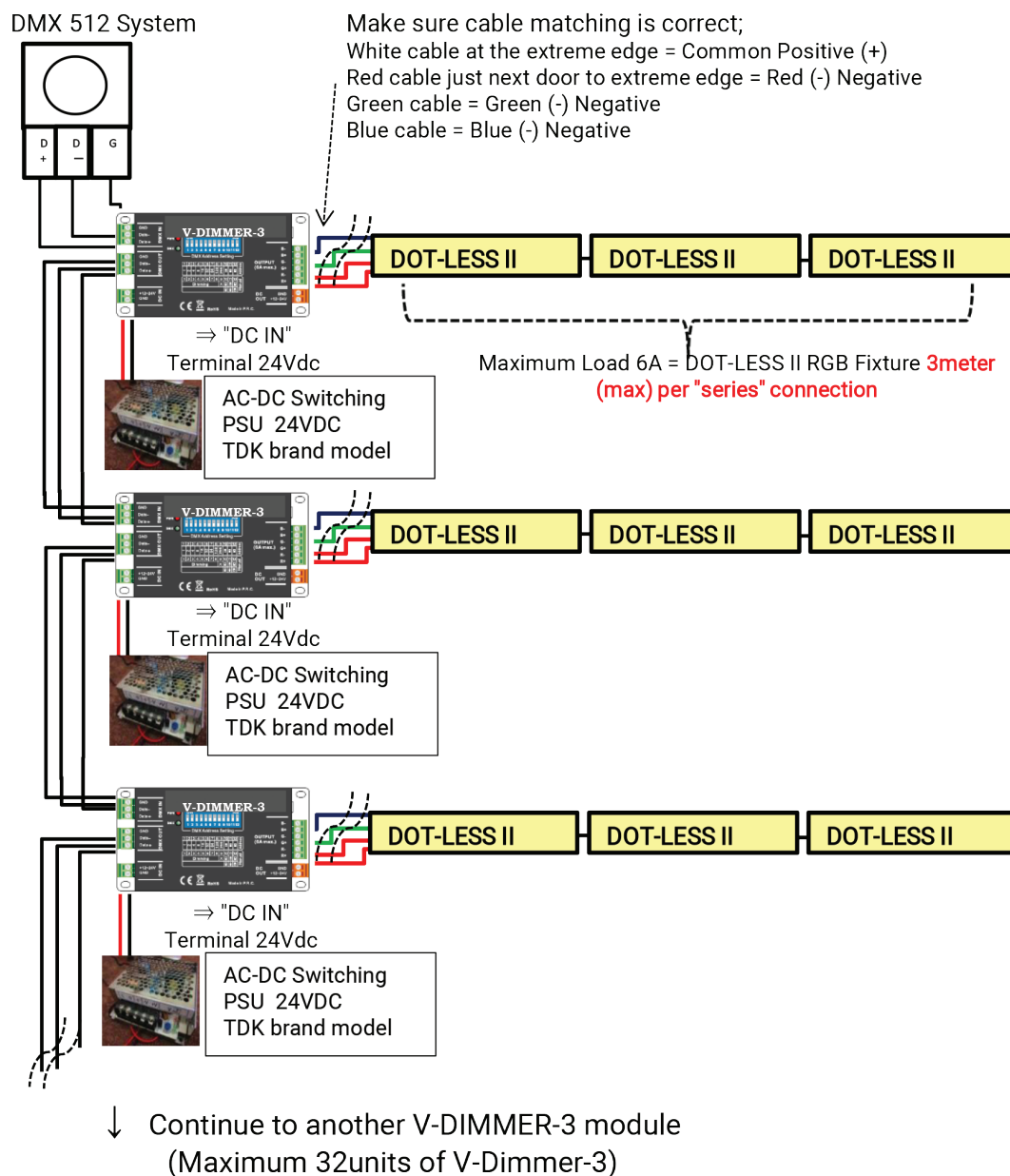
※ For IES data, please contact our sales staff or distributor

PROJECT REFERENCE



## CONTROL SYSTEM AND INSTALLATION GUIDANCE FOR DOT-LESS II RGB

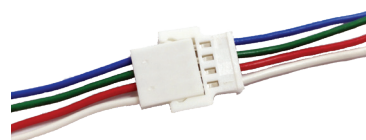
### Typical Schematic Wiring (Under DMX 512 System)



### Caution 1

Make sure polarity [positive (+) & negative (-)] and wires as per R•G•B colour are correct before switching on. Take note that white colour wire is positive (+) / common wire, and red•green•blue colour wires are negative (-).

Blue = for Blue LED (-)  
 Green = for Green LED (-)  
 Red = for Red LED (-)  
 White = Plus (+) / Common (+)



### Caution 2

For extension wire from switching power supply unit to LED, use **AWG16 (1.309mm<sup>2</sup>)** or thicker wire, provided distance between power supply unit and 1<sup>st</sup> LED is within 6 meters. Should distance between power supply unit and 1<sup>st</sup> LED exceeds 6 meter, please consult us individually on case-by-case basis, so that we will propose suitable wire gauge as well as wiring layout.